








PIANO DI EVACUAZIONE

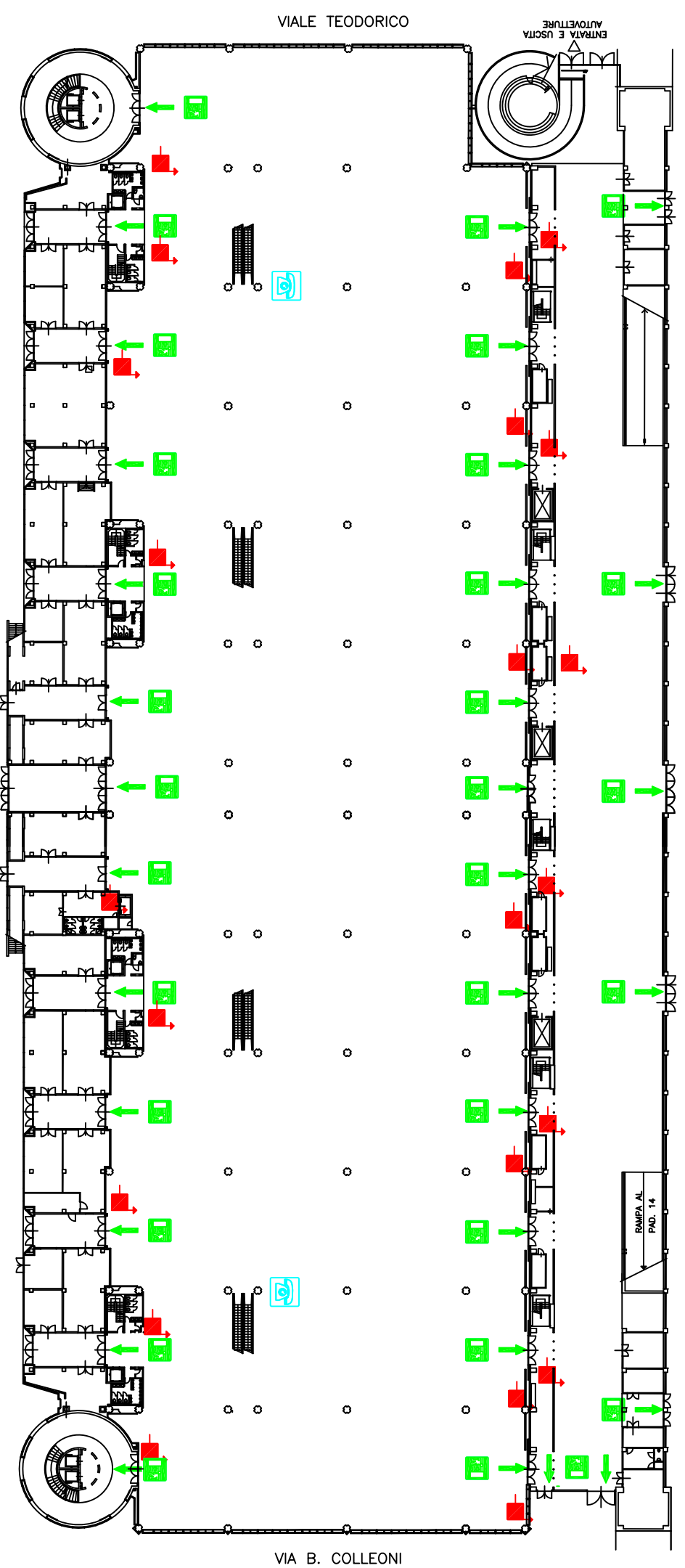
EVACUATION PLAN

PAD. 3 - PIANO TERRA

HALL 3 - GROUND FLOOR

LEGENDA	
	ESTINTORE FIRE EXTINGUISHER
	NASPO WINDER
	PERCORSO DI FUGA ESCAPE ROUTE
	PUNTI DI RADUNO GATHERING POINTS
	USCITA DI EMERGENZA SAFETY EXIT
	TELEFONO TELEPHONE
	VOI SIETE QUI YOU ARE HERE

**NON USARE L'ASCENSORE
IN CASO DI INCENDIO
DO NOT USE THE LIFT
IN CASE OF FIRE**



IN CASO DI EMERGENZA: IN CASE OF EMERGENCY

- 1 - CHIAMARE IL NR. 02/4342.7210 (O TRAMITE LINEE INTERNE IL NR. 7210)
PLEASE CALL TEL. NR. 02/4342.7210 (OR INTERNAL NUMBER 7210)
- 2 - DIRIGERSI VERSO LE USCITE
GO TOWARDS THE EXITS
- 3 - SEGUIRE ORDINATAMENTE I PERCORSI INDICATI
FOLLOW IN AN ORDERLY WAY THE INDICATED ESCAPE ROUTES
- 4 - MANTENERE LA CALMA
KEEP YOUR COOLNESS
- 5 - SEGUIRE LE ISTRUZIONI DEGLI ADDETTI ANTINCENDIO
FOLLOW THE INSTRUCTIONS OF THE STAFF